

# AMISTCO

PRODUCT BULLETIN - AKSP



## AMISTCO KNITTED STRUCTURED PACKING

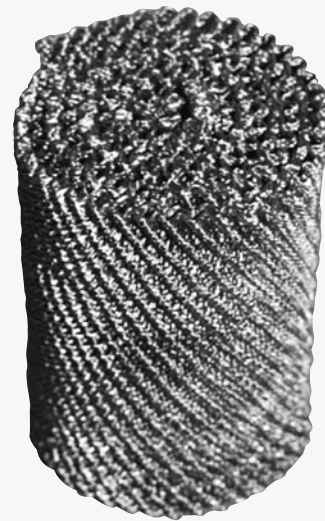
AKSP Tower packing is the AMISTCO Separation Products Goodloe® equivalent. Amistco high-efficiency structured packing is ideally suited for applications that demand high separation efficiency with a lower pressure drop. Its low HETP requirements result in smaller column heights.

The packing is made from multiple strands of fine wire that are knitted together in a tubular pattern and then crimped and coiled or layered to provide a three dimensional structure of peak and valleys. The multi-strand fine wire provides a high surface area and a capillary effect on the descending liquid to promote intimate vapor-liquid contact, uniform liquid distribution, and a thin layer of liquid film. This results in higher mass transfer efficiencies, lower pressure drop, and high turndown ratios, up to 20:1. Typical HETP values range from 3" to 12". For high vacuum services, 4" to 6" HETP is typical.

- **High Purity Product distillations** (fragrances, flavors, dyestuff intermediates, fluorinated hydrocarbons, lubricating oil additives, specialty monomers, pesticides, rubber processing)
- **Mass transfer** (deaeration, carbonation)
- **Solvent and Byproduct recovery-** (resins, coatings, fibers, films, pharmaceuticals, plasticizers, and custom distillations)
- **Scrubbing** (sulfur recovery, air purification)

The AKSP Structured Packing is available in a wide range of metal and alloy materials. For availability and lead times consult the factory.

AMISTCO Separations Products, Inc. manufactures a full line of tower internals, mist eliminators and other components critical to effective mass transfer and separation. For more details regarding these products, visit our website or consult with an AMISTCO Separations representative.



### PACKING DATA

Packing Style	Strand Diam., in.	Density lbs <sup>3</sup> ft.	Pct. Void Vol.	Sp. Surf., ft <sup>2</sup> per ft <sup>3</sup>
AKSP-12	0.0045	27.5	94.5	580
AKSP-8	0.0045	20.0	96.0	420

MIST ELIMINATORS | LIQUID/LIQUID COALESCERS | TRAYS PACKING & INTERNALS

23147 Hwy. 6 Alvin, Texas 77511 • Ph: (281) 331-5956 • Fax: (281) 585-1780 • www.amistco.com • amistco@amistco.com

24 Hour Emergency Service Available

Goodloe is a registered trademark of Metex



Emergency Phone: 1-800-839-6374